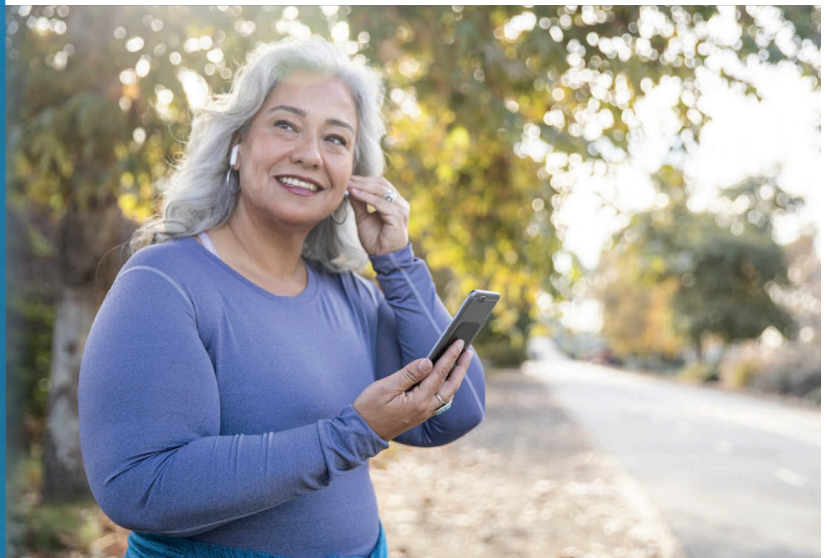


# Available Services When You Need Help the Most

Life Generations Healthcare LLC DBA Generations  
Healthcare



Life isn't always easy. Sometimes a personal or professional issue can affect your work, health and general well-being. During these tough times, it's important to have someone to talk with to let you know you're not alone.

With Mutual of Omaha's Employee Assistance Program, you can get the help you need so you spend less time worrying about the challenges in your life and can get back to being the productive worker your employer counts on to get the job done.

Learn more about the Employee Assistance Program services available to you.

— We are here for you —

Visit the Employee Assistance Program website to view timely articles and resources on a variety of financial, well-being, behavioral and mental health topics.

**[mutualofomaha.com/eap](https://mutualofomaha.com/eap)**  
**or call us: 1-800-316-2796**

## Enhanced EAP Services

Features	Value to Company and Employees
<b>Employee Family Clinical Services</b>	<ul style="list-style-type: none"> <li>An in-house team of Master's level EAP professionals who are available 24/7/365 to provide individual assessments</li> <li>Outstanding customer service from a team dedicated to ongoing training and education in employee assistance matters</li> <li>Access to subject matter experts in the field of EAP service delivery</li> </ul>
<b>Counseling Options</b>	<ul style="list-style-type: none"> <li>Three sessions per year (per household) conducted by either face-to-face* counseling or video telehealth via a secure, HIPAA compliant portal</li> </ul>
<b>Exclusive Provider Network</b>	<ul style="list-style-type: none"> <li>National network of more than 10,000 licensed clinical providers</li> <li>Network continually expanding to meet customer needs</li> <li>Flexibility to meet individual client/member needs</li> </ul>

\*California Residents: Knox-Keene Statute limits no more than three face-to-face sessions in a six-month period per person.

*Continued on back.*



## Enhanced EAP Services *(continued)*

Features	Value to Company and Employees
<b>Access</b>	<ul style="list-style-type: none"> <li>▪ 1-800 hotline with direct access to a Master’s level EAP professional</li> <li>▪ 24/7/365 services available</li> <li>▪ Telephone support available in more than 120 languages</li> <li>▪ Online submission form available for EAP service requests</li> <li>▪ EAP professionals will help members develop a plan and identify resources to meet their individual needs</li> </ul>
<b>Employee Family Legal Services</b>	<ul style="list-style-type: none"> <li>▪ Valuable resources – legal libraries, tools and forms – available on EAP website</li> <li>▪ A counseling session may be substituted for one legal consultation (up to 30 minutes) with an attorney</li> <li>▪ 25% discount for ongoing legal services for same issue</li> </ul>
<b>Employee Family Financial Services</b>	<ul style="list-style-type: none"> <li>▪ Inclusive financial platform powered by Enrich that includes financial assessment tools, personalized courses, articles and resources, and ongoing progress reports to help members monitor their financial health</li> <li>▪ A counseling session may be substituted for one financial consultation (up to 30 minutes) with an attorney</li> <li>▪ 25% discount for ongoing financial services for same issue</li> </ul>
<b>Employee Family Work/Life Services</b>	<ul style="list-style-type: none"> <li>▪ Child care resources and referrals</li> <li>▪ Elder care resources and referrals</li> </ul>
<b>Online Services</b>	<ul style="list-style-type: none"> <li>▪ An inclusive website with resources and links for additional assistance, including:               <ul style="list-style-type: none"> <li>▪ Current events and resources</li> <li>▪ Family and relationships</li> <li>▪ Emotional well-being</li> <li>▪ Financial wellness</li> <li>▪ Substance abuse and addiction</li> </ul> </li> <li>▪ Legal assistance</li> <li>▪ Physical well-being</li> <li>▪ Work and career</li> <li>▪ Bilingual article library</li> </ul>
<b>Employee Communication</b>	<ul style="list-style-type: none"> <li>▪ All materials available in English and Spanish</li> </ul>
<b>Eligibility</b>	<ul style="list-style-type: none"> <li>▪ Full-time employees and their immediate family members; including the employee, spouse and dependent children (unmarried and under 26) who reside with the employee</li> </ul>
<b>Coordination with Health Plan(s)</b>	<ul style="list-style-type: none"> <li>▪ EAP professionals will coordinate services with treatment resources/providers within the employee’s health insurance network to provide counseling services covered by health insurance benefits, whenever possible</li> </ul>